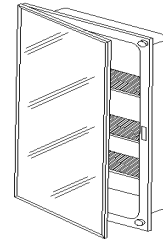


# B773385 HORIZON MEDICINE CABINET

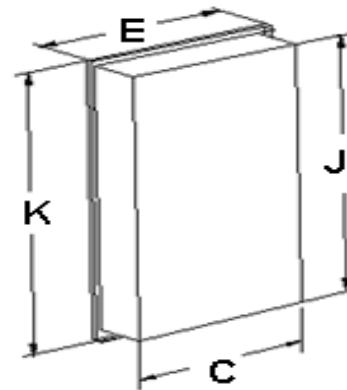
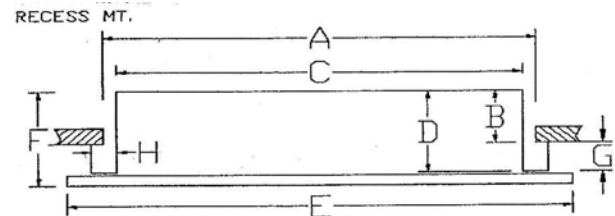


For Recess Installation with 13/16" Return and 1" Flange  
Frameless Bevel Swing Door

## SPECIFICATIONS

### FEATURES

- Recess Mounted Installation
- 5/32" Thick Float Glass Mirror with 1/2" Beveled Edges
- Molded White Polystyrene Body
- 26GA Steel Door Back with White Powder Coat Paint Finish
- 16" Piano Hinge Welded to the Door and Attached to the Cabinet Body with Screws
- Reversible for Right or Left Hand Swing (rotate cabinet)
- 3 Adjustable Plastic Shelves
- Fully Assembled for Quick Installation
- Includes Mounting Hardware



L is the wall opening for cabinet length (J)

MODEL	WALL OPENING			OVERALL SIZE			CABINET SIZE				
	A	L	B	E	K	F	C	J	D	H	G
B773385	14	23-3/4	3	16	26	3-3/4	13-1/2	23-1/4	3-3/8	1	13/16

REFERENCE	QTY.	REMARKS	Project
			Location
			Architect
			Engineer
			Contractor
			Submitted by <span style="float: right;">Date</span>

S90032001\_B773385